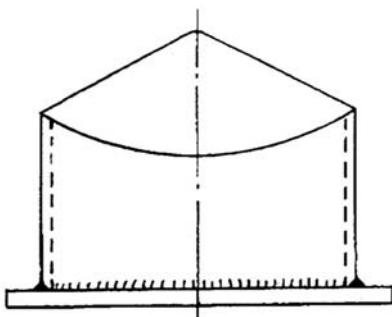
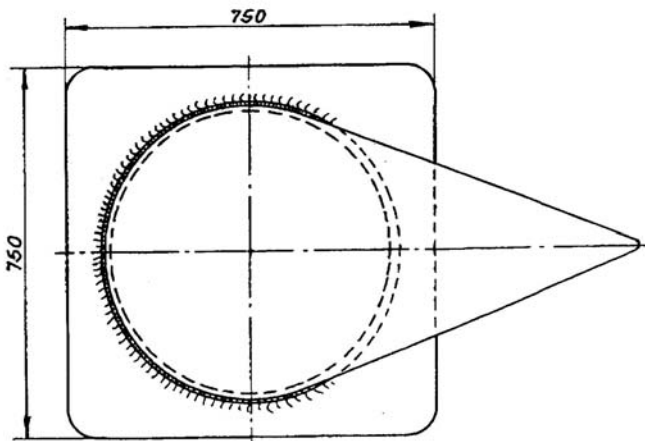
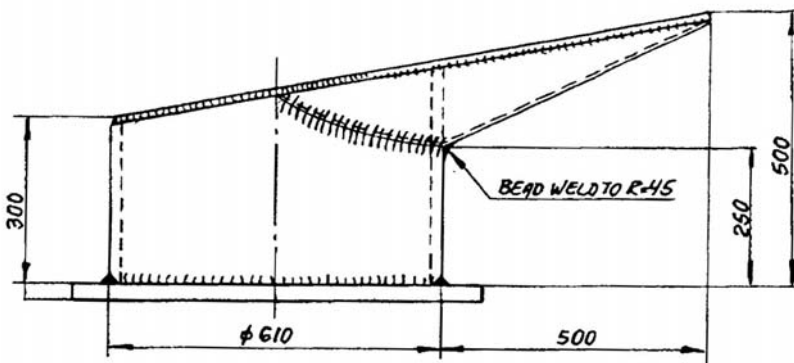


## Safety Bitt SP 200 / SP 500



Type approved product  
by I. Bennmo AB.

SAFETY BITT is a patented product.

### Specifications SP 200:

Material: S355J2G3

SWL / MBL: 100 / 200

Dimension: 1110 x 750 x 500mm  
+ base plate

Weight: 270 kg

Certificate: DNV S-4978

### Specifications SP 500:

Material: S355J2G3

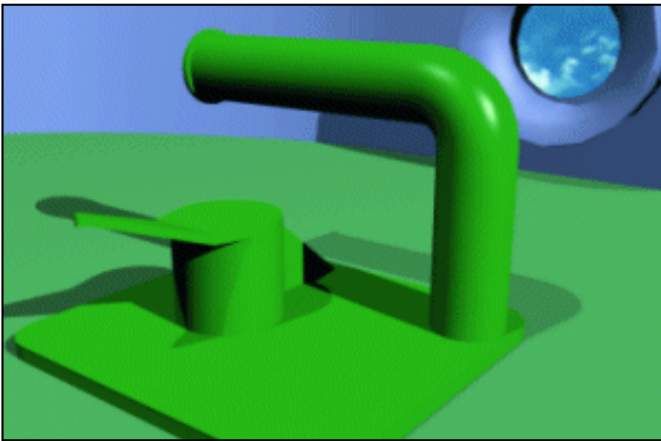
SWL / MBL: 250 / 500

Dimension: 1110 x 750 x 500mm  
+ base plate

Weight: 315 kg

Certificate: DNV S-4978

## Safety Bitt SZ 500



### Specifications:

Material: S355J2G3

SWL / MBL: 250 / 500

Dimension: 595 x 625 x 430mm

Weight: 100 kg

Certificate: DNV S-2935

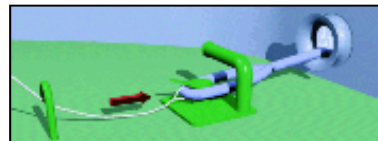
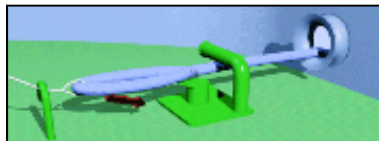


Type approved product  
by I. Benmo AB

SAFETY BITT is a patented product.

One of the most stressful jobs, with a considerable amount of force involved, is when a tug is about to be connected. Connecting a tug is also part of the berthing work, which involves the co-operation of the men working at the fore and aft stations. This is the main reason why the SAFETY BITT was designed.

CONNECT:



DISCONNECT:

