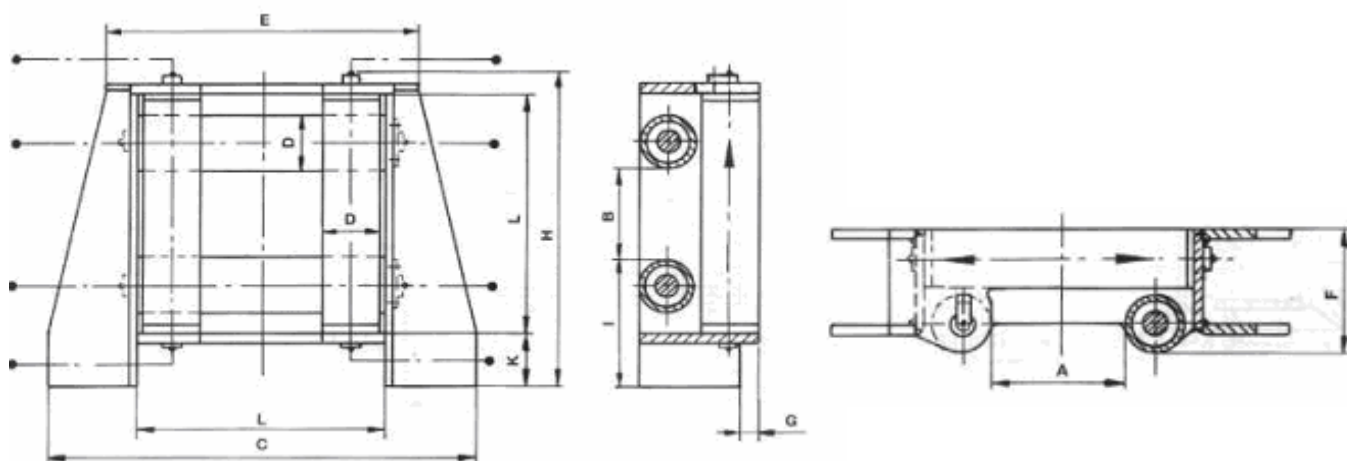




southern-marine.com

Roller fairlead



Our fairleads are designed for 1 rope and mounting free on deck / welding into the bulwark. Rope turn 90°. The rollers and axles are interchangeable. The values of the tabulations are our standard. If desired we can make specials in the same format. Approved by "St. Lawrence Seaway Authority".

Type	Wire Size Ø mm	A	B	C	D	E	F	G	H	I	K	L	Weight kg
BW8F	12	180	100	650	80	446	170	10	456	208	80	356	69
BW10F	16	230	130	800	100	546	210	10	571	258	100	446	130
BW12F	20	250	130	900	120	626	250	15	656	308	120	506	220
BW14F	24	280	160	1.000	140	716	288	20	726	328	120	576	320
BW18F	32	300	160	1.200	180	836	366	25	852	398	140	676	580
BW24,5F	40	320	180	1.350	245	1.030	500	35	1.035	505	180	830	1.100
BW30F	48	400	250	1.700	300	1.236	610	45	1.260	583	200	1.016	2.210

Roller	Rated towing pull	Rope Ø	Wire breaking strength
80 mm	20 kN	-12 mm	150 kN
100 mm	30 kN	-16 mm	220 kN
120 mm	50 kN	-20 mm	350 kN
140 mm	80 kN	-24 mm	500 kN
180 mm	120 kN	-32 mm	800 kN
245 mm	200 kN	-40 mm	1150 kN
300 mm	320 kN	-48 mm	1750 kN

Casing:	Welded construction
Standard bearing:	Bronze slide bearing, seawater resistant, with grease lubrication
Special bearings:	Polyamid / bronze bearing (no maintenance) Bronze / stainless steel bearing
Lubrication nipples:	Hydraulic type M10 x 14 according to DIN 71412 - 5.8 zinced